



SLIDE RAIL SHORING SYSTEMS

Slide Rail Rolling Strut Systems

Trench Shoring Company's SBH Slide Rail Shoring systems offer highly effective solutions in areas with unfavorable ground conditions, or where existing underground infrastructures make trench support difficult. Our patented shoring systems can handle very deep and wide trenches, high clearance requirements, and will support surcharge loads from trains, soil and other required construction equipment. Additionally, using SBH Slide Rail equipment instead of traditional beam and plate or solid sheet shoring, ensures worker safety, saves the contractor money, and helps keep projects on schedule.

- Provides safety while excavating
- Tight sheeting without soil movement
- Vibration free, no damage to adjacent structures
- Saves money: Less material cost than conventional sheeting, finish in a third of the time using half the labor
- Engineered to meet O.S.H.A.

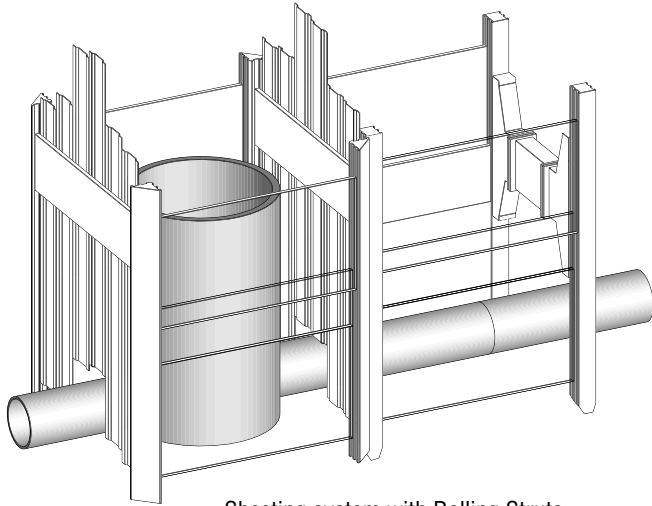


"Commitment To Safety & Service"
Since 1973

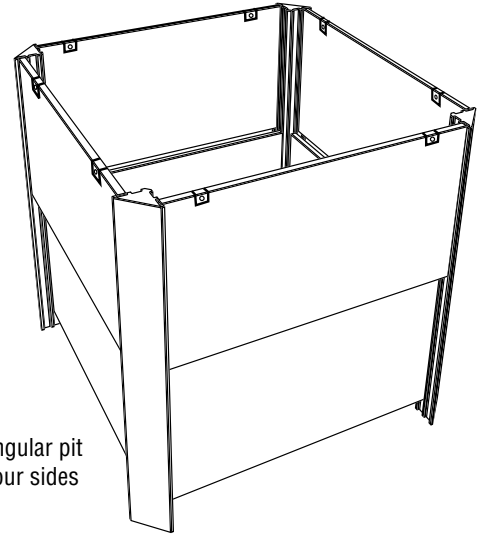
Providing same day service from all our locations to Southern California, San Leandro/Bay Area, Bakersfield, Fresno, the San Joaquin Valley and the Las Vegas, Nevada areas.

310-327-5554
TrenchShoring.com

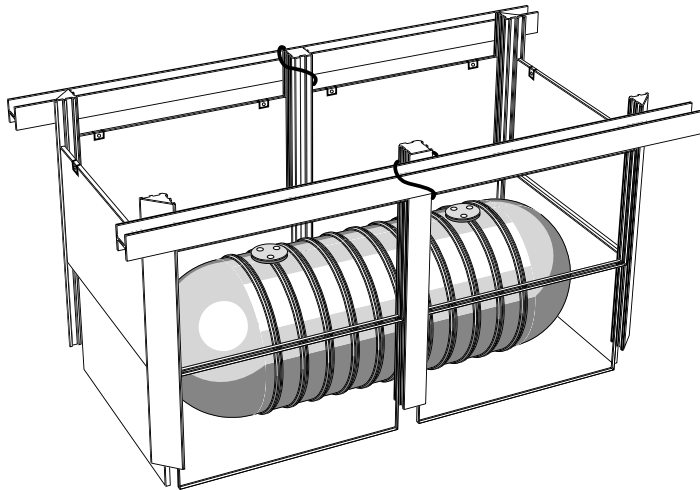
SLIDE RAIL SYSTEMS



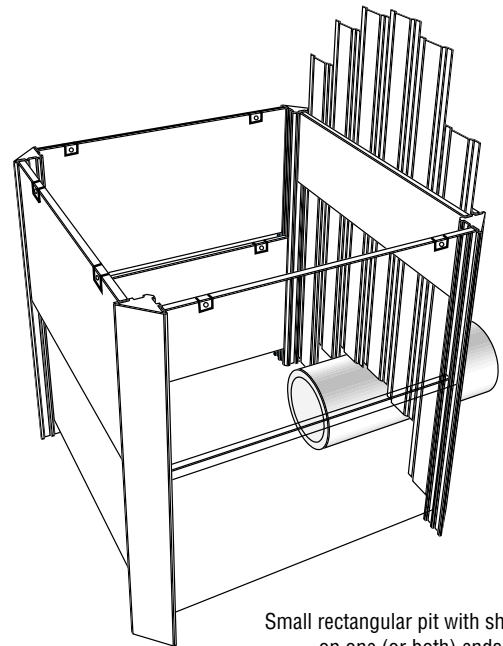
Sheeting system with Rolling Struts



Small rectangular pit closed all four sides



Two bay sheeted pit—re-braced



Small rectangular pit with sheeting on one (or both) ends

PROVIDING SAME DAY SERVICE FROM ALL OUR LOCATIONS

Compton • Corporate Office

206 N. Central Ave.
Compton, CA 90220
(310) 327-5554

Bakersfield

301 Lawson Rd.
Bakersfield, CA 93307
(661) 396-9160

Fresno

88 N. Hughes Ave.
Fresno, CA 93706
(559) 691-4123

Moorpark

13826 Princeton Ave.
Moorpark, CA 93021
(805) 529-4614

Las Vegas, Nevada

4035 Flossmoor St.
Las Vegas, NV 89115
(702) 651-0920



Banning

1184 W. Lincoln St.
Banning, CA 92220
(951) 849-1611

Fullerton

1400 E. Orangethorpe Ave.
Fullerton, CA 92831
(714) 879-1005

San Diego

9450 Dowdy Dr.
San Diego, CA 92126
(858) 530-2500

Corona

325 N. Cota St.
Corona, CA 92880
(951) 734-4290

Lake Forest

20542 Pascal Way
Lake Forest, CA 92630
(949) 454-0858

San Leandro

2371 Polvorosa Ave.
San Leandro CA 94577
510-900-0595



TrenchShoring.com