

**"COMMITMENT TO SAFETY AND SERVICE" SINCE 1973**



# EQUIPMENT LIST RENTAL & SALES

**We know every job is different.** Our expert consultants are there to help guide your project, train your teams, and ensure your shoring equipment needs are met – starting with offering 13 standard and custom sizes of steel trench plates, as well as Trench Shields™, Hydraulic Shoring, Slide Rail and additional underground equipment.

**For decades, the Southern California & Nevada construction industry has counted on Trench Shoring Company** for our extensive shoring knowledge, complete inventory and same-day service. **We know time is money** – so we provide same-day service from our 11 locations across Southern California, the Bay Area, Bakersfield, Fresno, the the San Joaquin Valley and the Las Vegas, Nevada areas. Whether it's for a current project – or your next project – Make Trench Shoring Company your 1st choice for shoring equipment and service. Trench Shoring Company has consistently handled our customer's toughest jobs and the most challenging job requirements – with safety, service and customer satisfaction – since our start in 1973.



**"Commitment To Safety & Service"  
Since 1973**

**800-423-4411  
TrenchShoring.com**

# EQUIPMENT LIST — RENTAL & SALES

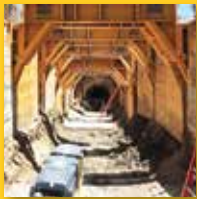
## Steel Flex-Shield™ Steel Trench Shields



Size	Weight #
H L TH	
4' x 6' x 3"	1,671
6' x 6' x 3"	2,515
8' x 6' x 3"	3,235
4' x 8' x 3"	2,078
6' x 8' x 3"	3,077
8' x 8' x 3"	3,952
10' x 8' x 3"	5,200
4' x 10' x 3"	2,344
6' x 10' x 3"	3,498
8' x 10' x 3"	4,518
10' x 10' x 3"	5,765
4' x 12' x 3"	2,719
6' x 12' x 3"	4,028
8' x 12' x 3"	5,213
10' x 12' x 3"	7,300
4' x 14' x 4"	3,950
6' x 14' x 4"	5,500
8' x 14' x 4"	7,100
10' x 14' x 4"	9,150
4' x 16' x 4"	4,500
6' x 16' x 4"	6,261
8' x 16' x 4"	8,118
10' x 16' x 4"	10,443
4' x 18' x 4"	5,350
6' x 18' x 4"	7,410
8' x 18' x 4"	9,900
10' x 18' x 4"	11,900



## Spreaders



High Clearance



Doubler Frame

## Square Manhole Boxes & Round Manhole Shields



Size	Weight #	Size	Weight #
H L TH		H L TH	
4' x 6' x 3"	2,250	4' x 10' x 3"	3,400
6' x 6' x 3"	2,515	6' x 10' x 3"	5,100
8' x 6' x 3"	3,850	8' x 10' x 3"	6,650
4' x 8' x 3"	2,350	<b>Round Manhole Shields</b>	
6' x 8' x 3"	3,525	8' x 8.5' x 1"	1,700
8' x 8' x 3"	4,700	4' x 8.5' x 1"	1,200

## Steel Framed Aluminum Trench Shields



Size	Weight #	Size	Weight #
H L TH		H L TH	
4' x 6' x 3"	970	8' x 6' x 3"	1,432
4' x 8' x 3"	1,176	8' x 8' x 3"	1,746
4' x 10' x 3"	1,380	8' x 10' x 3"	2,060
4' x 12' x 3"	1,584	8' x 12' x 3"	2,374
4' x 14' x 3"	1,790	8' x 14' x 3"	2,690
4' x 16' x 3"	1,994	8' x 16' x 3"	3,004
6' x 6' x 3"	1,202		
6' x 8' x 3"	1,460		
6' x 10' x 3"	1,720		
6' x 12' x 3"	1,980		
6' x 14' x 3"	2,240		
6' x 16' x 3"	2,498		



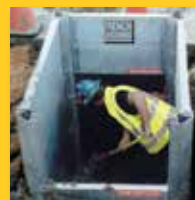
## AEX Aluminum Framed Trench Shields



Size	Weight #
H L TH	
4' x 8' x 2"	650
6' x 8' x 2"	920
8' x 8' x 2"	1,200
4' x 10' x 4"	1,150
6' x 10' x 4"	1,710
8' x 10' x 4"	2,200
4' x 12' x 4"	1,450
6' x 12' x 4"	2,100
8' x 12' x 4"	2,650
4' x 16' x 4"	1,750
6' x 16' x 4"	2,450
8' x 16' x 4"	3,200
4' x 18' x 4"	2,300
6' x 18' x 4"	2,860
8' x 18' x 4"	3,450



## Modular Aluminum Panel Shields (MAPS)



Size	Weight #
H L TH	
2' x 3' x 2.5"	37
2' x 4' x 2.5"	51
2' x 5' x 2.5"	62
2' x 6' x 2.5"	79
2' x 8' x 2.5"	106
2' x 10' x 2.5"	134
2' x 12' x 2.5"	162
2' x 14' x 2.5"	180

## Aluminum Hydraulic Trench Shields



Size	Weight #
H L TH	
6' x 8' x 1.5"	1,238
6' x 10' x 1.5"	1,534
6' x 12' x 1.5"	1,702
8' x 8' x 1.5"	1,374
8' x 10' x 1.5"	1,686
8' x 12' x 1.5"	1,913

## Aluminum Hydraulic Shoring Standard & High Clearance



Dimensions Inches	Dimensions Feet
17" to 27"	1' 5" to 2' 3"
22" to 36"	1' 10" to 3'
25" to 42"	2' 1" to 3' 6"
31" to 45"	2' 7" to 3' 9"
34" to 56"	2' 10" to 4' 8"
40" to 64"	3' 4" to 5' 4"
52" to 88"	4' 4" to 7' 4"
61" to 97"	5' 1" to 8' 1"
70" to 106"	5' 10" to 8' 10"
79" to 115"	6' 7" to 9' 7"
88" to 124"	7' 4" to 10' 4"
97" to 133"	8' 10" to 11' 10"
106" to 142"	8' 1" to 11' 1"
132" to 168"	11' to 14'
144" to 180"	12' to 15'



## Z-Shore™ Hydraulic Ram Shoring



Z-Shore can be mounted on timbers of varying thickness, or even steel beams to meet your structural needs in the space allowed. It fits trenches from 5' to 30' wide, of any depth, with a hydraulic stroke from 2' to 3'.

## Steel Trench Plates



Regular & Non-Skid

1" Steel		1-1/4" Steel	
Size	Weight #	Size	Weight #
4' x 5'	820	8' x 10'	4,100
4' x 6'	984	<b>1-1/2" Steel</b>	
4' x 8'	1,312	Size	Weight #
5' x 8'	1,640	6' x 10'	3,690
6' x 8'	1,968	6' x 12'	4,428
8' x 8'	2,624	8' x 10'	4,800
4' x 10'	1,640	8' x 12'	5,904
5' x 10'	2,045	8' x 15'	7,380
6' x 10'	2,460	8' x 20'	9,840
8' x 10'	3,280	<b>Additional Sizes Available</b>	
4' x 12'	1,968		
6' x 12'	2,952		
8' x 12'	3,936		
8' x 15'	4,920		
8' x 16'	5,248		
4' x 20'	3,280		
8' x 20'	6,560		

## Composite Trench Covers



1-1/4" Composite	
Size	Weight #
59" x 39.3"	95

## Wide Flange Beams & Steel Plates



H-Beams	Weight #	H-Beams	Weight #
8"	40	24"	131
12"	65	24"	146
14"	90	24"	162
14"	99	36"	194
14"	109		
14"	120		

H-Beams available in lengths through 65'

## Dual Pack Shores/Struts



Dual Pack Shores allow you to use a variety of materials including end loading, aluminum overlap sheet pile, Fin Form/1-1/8" plywood, steel plates, directly on steel beams for a static strut replacement.

## Manhole Braces



Designed and engineered to work in 2 and 4 sided applications, the 3" Dual Action Manhole Shore is able to incorporate a variety of sheeting materials, including Steel Overlap Sheeting, making the system ideal for vaults, C.I.P. projects, pump stations and many more projects.

## Z3 Waler System



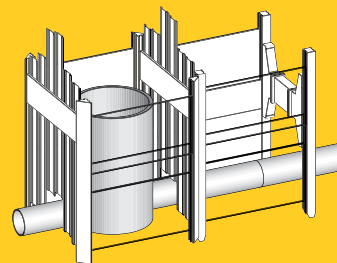
Count on Z3 Waler Systems for excavation support when longer clear span work areas are needed in excavations that are in less stable soils requiring close or intermittent sheeting. Constructed to allow for quick installation and removal from above ground, keeping personnel safely out of un-shored excavations.

## Aluminum Waler

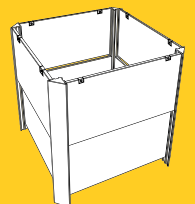


Designed to allow maximum protection, coupled with the versatility and flexibility needed to work around crossing utility lines. Walers with hydraulic struts allow end-loading in a 3- or 4-sided application, for pipe repair or valve maintenance.

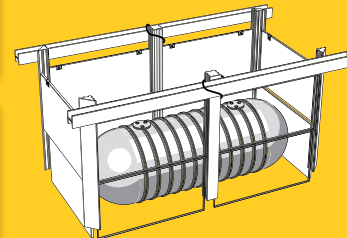
## SBH® Slide Rail Rolling Strut System



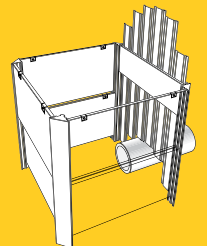
Sheeting system with Rolling Struts



Small rectangular pit closed all four sides



Two bay sheeted pit—re-braced



Small rectangular pit with sheeting on one (or both) ends

## SBH® Hydralifter T100



The Hydralifter is a hydraulic panel, post, and steel plate extractor. It is used to break free the inner base and top plates that are used in Slide Rail shoring. The Hydralifter safely and gently removes plates without the use of heavy excavators leading to: safety on the site; less equipment damage; less vibration and noise; saving of time and costs.

# SHORING & MORE, WE ALSO RENT AND SELL...



## Trench Shoring University (TSU) Now Offers Even More Access with Both Online and In-Person OSHA-Compliant Training and Bilingual Safety Training in Spanish and English

### TSU Confined Space Entry Training

TSU's Confined Space Entry training program, "Confined Space Entry" is intended to provide managers, foremen, competent persons, and workers with basic information regarding entry into confined spaces. The goals of this class are: to create an awareness of the hazards associated with confined space entry; to help workers understand the procedures that must be followed when entering confined spaces; and to provide managers with basic information necessary to establish a confined space entry program.

TSU also now offers Confined Space Entry Training in Spanish.

### Competent Person Training for Trenching & Excavating

Our Competent Person for Trenching and Excavating Seminar provides comprehensive training in OSHA Safety and Compliance for would be Competent Persons in the discipline of Trenching and Excavating. The seminars cover CAL-O.S.H.A. Title 8, section 1540 through 1541.1 and Fed OSHA 29 cfr 1926 Subpart P for trenching and excavating. The excavation standard, the general requirements for working in trenches and excavations safely, soils classification, protective systems and an introduction to confined space entry.

Find out more at: [TrenchShoringUniversity.com](http://TrenchShoringUniversity.com)



"Commitment To Safety & Service" Since 1973

**Compton • Corporate Office**  
206 N. Central Ave.  
Compton, CA 90220  
(310) 327-5554

[TrenchShoring.com](http://TrenchShoring.com)

**Bakersfield**  
(661) 396-9160

**Banning**  
(951) 849-1611

**Corona**  
(951) 734-4290

**Fresno**  
(559) 691-4123

**Fullerton**  
(714) 879-1005

**Lake Forest**  
(949) 454-0858

**Moorpark**  
(805) 529-4614

**San Diego**  
(858) 530-2500

**San Leandro**  
(510) 900-0595

**Las Vegas**  
(702) 651-0920

