

"COMMITMENT TO SAFETY AND SERVICE" SINCE 1973



EQUIPMENT LIST

RENTAL & SALES

For Decades, the California & Nevada Construction Industry has Counted on Trench Shoring Company

For our extensive shoring knowledge, complete inventory and same-day service. **We know time is money** – so we provide same-day service from our 11 locations across Southern California, the Bay Area, Bakersfield, Fresno, the California Central Coast and Las Vegas, Nevada areas. Whether it's for a current project – or your next project – Make Trench Shoring Company your 1st choice for shoring equipment and service. Trench Shoring Company has consistently handled our customer's toughest jobs and the most challenging job requirements – with safety, service and customer satisfaction – since our start in 1973.

Trench Shoring University (TSU)

TSU now offers even more access with live online and on-location OSHA compliant training.



"Commitment To Safety & Service"
Since 1973

TrenchShoring.com

EQUIPMENT LIST — RENTAL & SALES

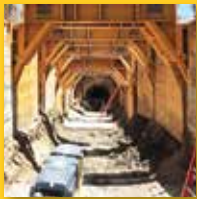
Steel Trench Shields (Flex-Shield™)



Size	Weight #
H L TH	
4' x 6' x 3"	1,671
6' x 6' x 3"	2,515
8' x 6' x 3"	3,235
10' x 6' x 3"	4,375
4' x 8' x 3"	2,078
6' x 8' x 3"	3,077
8' x 8' x 3"	3,952
10' x 8' x 3"	5,200
4' x 10' x 3"	2,344
6' x 10' x 3"	3,498
8' x 10' x 3"	4,518
10' x 10' x 3"	5,765
4' x 12' x 3"	2,719
6' x 12' x 3"	4,028
8' x 12' x 3"	5,213
10' x 12' x 3"	7,300
4' x 14' x 4"	3,950
6' x 14' x 4"	5,500
8' x 14' x 4"	7,100
10' x 14' x 4"	9,150
4' x 16' x 4"	4,500
6' x 16' x 4"	6,261
8' x 16' x 4"	8,118
10' x 16' x 4"	10,443
4' x 18' x 4"	5,350
6' x 18' x 4"	7,410
8' x 18' x 4"	9,900
10' x 18' x 4"	11,900



Spreaders



High Clearance



Doubler Frame

Manhole Boxes



Size	Weight #
H L TH	
4' x 6' x 3"	2,250
6' x 6' x 3"	2,515
8' x 6' x 3"	3,850
4' x 8' x 3"	2,350
6' x 8' x 3"	3,525
8' x 8' x 3"	4,700

Steel Framed Aluminum Shields



Size	Weight #
H L TH	
4' x 10' x 3"	1,380
6' x 10' x 3"	1,720
8' x 10' x 3"	2,060
4' x 12' x 3"	1,584
6' x 12' x 3"	1,980
8' x 12' x 3"	2,374



AEX Aluminum Shields



Size	Weight #
H L TH	
4' x 10' x 4"	1,150
6' x 10' x 4"	1,710
8' x 10' x 4"	2,200
4' x 12' x 4"	1,450
6' x 12' x 4"	2,100
8' x 12' x 4"	2,650
4' x 16' x 4"	1,750
6' x 16' x 4"	2,450
8' x 16' x 4"	3,200
4' x 18' x 4"	2,300
6' x 18' x 4"	2,860
8' x 18' x 4"	3,450



Modular Aluminum Panel Shields (MAPS)



Size	Weight #
H L TH	
2' x 3' x 2.5"	37
2' x 4' x 2.5"	51
2' x 5' x 2.5"	62
2' x 6' x 2.5"	79
2' x 8' x 2.5"	106
2' x 10' x 2.5"	134
2' x 12' x 2.5"	162
2' x 14' x 2.5"	180

Aluminum Hydraulic Shields



Size	Weight #
H L TH	
6' x 8' x 1.5"	1,238
8' x 8' x 1.5"	1,374
6' x 10' x 1.5"	1,534
8' x 10' x 1.5"	1,686
6' x 12' x 1.5"	1,702
8' x 12' x 1.5"	1,913

Aluminum Hydraulic Shoring Standard & High Clearance



Dimensions Inches	Dimensions Feet
17" to 27"	1' 5" to 2' 3"
22" to 36"	1' 10" to 3'
25" to 42"	2' 1" to 3' 6"
28" to 46"	2' 4" to 3' 10"
31" to 45"	2' 7" to 3' 9"
34" to 56"	2' 10" to 4' 8"
40" to 64"	3' 4" to 5' 4"
52" to 88"	4' 4" to 7' 4"
61" to 97"	5' 1" to 8' 1"
70" to 106"	5' 10" to 8' 10"
76" to 112"	6' 4" to 9' 4"
79" to 115"	6' 7" to 9' 7"
88" to 124"	7' 4" to 10' 4"
94" to 130"	7' 4" to 10' 10"
97" to 133"	8' 1" to 11' 10"
106" to 142"	8' 10" to 11' 1"
108" to 144"	9' to 12'
124" to 160"	10' 4" to 13' 4"
132" to 168"	11' to 14'
144" to 180"	12' to 15'
162" to 198"	13' 6" to 16' 6"
180" to 216"	15' to 18'



Z-Shore™ Hydraulic Ram Shoring



Z-Shore can be mounted on timbers of varying thickness, or even steel beams to meet your structural needs in the space allowed. It fits trenches from 5' to 30' wide, of any depth, with a hydraulic stroke from 2' to 3'.

Manhole Braces



Designed and engineered to work in 2 and 4 sided applications, the 3" Dual Action Manhole Shore is able to incorporate a variety of sheeting materials, including Steel Overlap Sheeting, making the system ideal for vaults, C.I.P. projects, pump stations and many more projects.

Steel Trench Plates



1" Steel Size	Weight #	1-1/4" Steel Size	Weight #
4' x 5'	820	8' x 10'	4,100
4' x 6'	984		
4' x 8'	1,312	1-1/2" Steel Size	
5' x 8'	1,640	6' x 10'	3,690
6' x 8'	1,968	6' x 12'	4,428
8' x 8'	2,624	8' x 10'	4,800
4' x 10'	1,640	8' x 12'	5,904
5' x 10'	2,045	8' x 15'	7,380
6' x 10'	2,460	8' x 20'	9,840
8' x 10'	3,280		
4' x 12'	1,968	Additional Sizes Available	
6' x 12'	2,952		
8' x 12'	3,936		
8' x 15'	4,920		
8' x 16'	5,248		
4' x 20'	3,280		
8' x 20'	6,560		
8' x 24'	7,872		



Regular & Non-Skid

Z3 Waler System



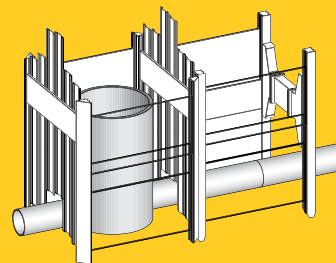
Count on Z3 Waler Systems for excavation support when longer clear span work areas are needed in excavations that are in less stable soils requiring close or intermittent sheeting. Constructed to allow for quick installation and removal from above ground, keeping personnel safely out of un-shored excavations.

Aluminum Waler

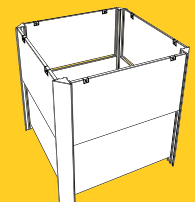


Designed to allow maximum protection, coupled with the versatility and flexibility needed to work around crossing utility lines. Walers with hydraulic struts allow end-loading in a 3- or 4-sided application, for pipe repair or valve maintenance.

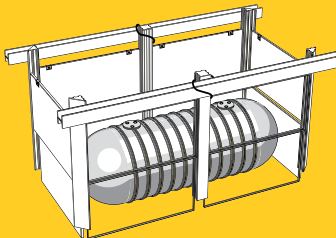
SBH® Slide Rail Rolling Strut System



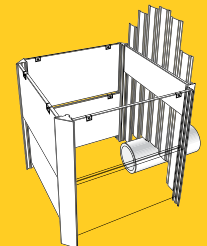
Sheeting system with Rolling Struts



Small rectangular pit closed all four sides



Two bay sheeted pit—re-braced



Small rectangular pit with sheeting on one (or both) ends



Composite Trench Covers



1-1/4" Composite Size	Weight #
59" x 39.3"	95

Wide Flange Beams & Steel Plates



H-Beams	Weight #	H-Beams	Weight #
8"	40	24"	131
12"	65	24"	146
14"	90	24"	162
14"	99	36"	194
14"	109		
14"	120	Additional Sizes Available	

H-Beams available in lengths through 65'

Dual Pack Shores/Struts



Dual Pack Shores allow you to use a variety of materials including end loading, aluminum overlap sheet pile, Fin Form/1-1/8" plywood, steel plates, directly on steel beams for a static strut replacement.

SBH® Hydralifter T100



The Hydralifter is a hydraulic panel, post, and steel plate extractor. It is used to break free the inner base and top plates that are used in Slide Rail shoring. The Hydralifter safely and gently removes plates without the use of heavy excavators leading to: safety on the site; less equipment damage; less vibration and noise; saving of time and costs.

SHORING & MORE, WE ALSO RENT AND SELL...

K-Rail



Water Barriers



Flo-Line™



Gas Monitors-4 Gas



Tripod w/Harness



Blowers



Grizzly Screen



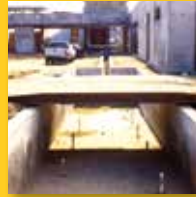
Bedding Boxes



Alum. Trench Bridges



Steel Bridges



Screw Jacks & Plates



Hydraulic Pipe Pullers



TRACKCLEAN®



Fall Protection Anchor



RailGuard 200™



LadderSafe Platform



Self Standing Davit



Clamp-On Davit



Composite Trench Covers



Pipeline Testing



Safe-T-Stik XL



Portable Stairs



End Shore



Corner Shore



Trench Shoring University (TSU) Now Offers Even More Access with Both Live Online and In-Person OSHA-Compliant Training.

Confined Space Entry Training

TSU's Confined Space Entry training program provides managers, foremen, competent persons, and workers with basic information regarding entry into confined spaces. The goals of this class are: to create an awareness of the hazards associated with confined space entry; to help workers understand the procedures that must be followed when entering confined spaces; and to provide managers with basic information necessary to establish a confined space entry program.

Competent Person Training for Trenching & Excavating

Our Competent Person for Trenching and Excavating Seminar provides comprehensive training in OSHA Safety and Compliance in the discipline of Trenching and Excavating. The seminar covers CAL-O.S.H.A. Title 8, section 1540 through 1541.1 and Fed OSHA 29 cfr 1926 Subpart P excavation standard. Including general requirements for working in trenches and excavations safely, soils classification, protective systems and an introduction to confined space entry.

Find out more at: TrenchShoring.com/Training



"Commitment To Safety & Service"
Since 1973

Compton • Corporate Office

206 N. Central Ave.
Compton, CA 90220
(310) 327-5554

TrenchShoring.com

Bakersfield

(661) 396-9160

Banning

(951) 849-1611

Corona

(951) 734-4290

Fresno

(559) 691-4123

Fullerton

(714) 879-1005

Lake Forest

(949) 454-0858

Moorpark

(805) 529-4614

San Diego

(858) 530-2500

San Leandro

(510) 900-0595

Las Vegas

(702) 651-0920

