

"COMMITMENT TO SAFETY AND SERVICE" SINCE 1973



EQUIPMENT LIST RENTAL & SALES

For your toughest jobs you demand experienced professionals, backed by the largest inventory. Trench Shoring Company was founded in 1973 on our commitment to provide the construction industry with the finest in shoring equipment, including Trench Tops™ (trench plates), Trench Shields™, Hydraulic Shoring, Slide Rail and additional underground equipment. Our Trench Tops come in thirteen standard sizes with special sizes available on request. We also offer same-day service from our ten locations. What's more, because we know every job is different. Plus, our expert consultants are there to help guide your project. Decades of construction knowledge. Extensive inventory. Trench Shoring Company will be there to service your most challenging job requirements. Our dedication to safety and service are key to our growth and customer satisfaction.

Providing same day service from our 10 locations to Southern California, Bakersfield, Fresno, the CA Central Coast and the Las Vegas, Nevada areas.



**"Commitment To Safety & Service"
Since 1973**

**800-423-4411
TrenchShoring.com**

EQUIPMENT LIST — RENTAL & SALES

Steel Flex-Shield™ Trench Boxes



Size	Weight #
4' x 6' x 3"	1,671
6' x 6' x 3"	2,515
8' x 6' x 3"	3,235
4' x 8' x 3"	2,078
6' x 8' x 3"	3,077
8' x 8' x 3"	3,952
4' x 10' x 3"	2,344
6' x 10' x 3"	3,498
8' x 10' x 3"	4,518
10' x 10' x 3"	5,765
10' x 10' x 4"	9,960
4' x 12' x 3"	2,719
6' x 12' x 3"	4,028
8' x 12' x 3"	5,213
10' x 12' x 3"	7,300
4' x 14' x 4"	3,950
6' x 14' x 4"	5,500
8' x 14' x 4"	7,100
10' x 14' x 4"	9,150
4' x 16' x 4"	4,500
6' x 16' x 4"	6,261
8' x 16' x 4"	8,118
10' x 16' x 4"	10,443
4' x 18' x 4"	5,350
6' x 18' x 4"	7,410
8' x 18' x 4"	9,900



Size	Weight #
10' x 18' x 4"	11,900
4' x 20' x 4"	5,730
6' x 20' x 4"	8,005
8' x 20' x 4"	10,865
10' x 20' x 4"	12,949
10' x 20' x 6"	14,235
4' x 24' x 6"	6,859
4' x 24' x 6"	7,744
6' x 24' x 6"	9,392
8' x 24' x 6"	11,857
8' x 24' x 6"	13,819
10' x 24' x 6"	14,893
10' x 24' x 8"	18,720
4' x 28' x 8"	11,920
6' x 28' x 8"	15,750
8' x 28' x 8"	20,567
10' x 28' x 8"	24,415
4' x 30' x 8"	14,800
6' x 30' x 8"	21,460
8' x 30' x 8"	25,700
10' x 30' x 8"	32,600
4' x 32' x 8"	13,256
6' x 32' x 8"	17,637
8' x 32' x 8"	22,624
10' x 32' x 8"	29,008

Square & Round (Casings) Manhole Boxes



Size	Weight #
4' x 6' x 3"	2,250
6' x 6' x 3"	2,515
8' x 6' x 3"	3,850
4' x 8' x 3"	2,350
6' x 8' x 3"	3,525
8' x 8' x 3"	4,700

Size	Weight #
4' x 10' x 3"	3,400
6' x 10' x 3"	5,100
8' x 10' x 3"	6,650
Round (Casings)	
8' x 8.5' x 1"	1,700
4' x 8.5' x 1"	1,200

Steel Framed Aluminum Trench Shields



Size	Weight #
6' x 4' x 3"	970
8' x 4' x 3"	1,176
10' x 4' x 3"	1,380
12' x 4' x 3"	1,584
14' x 4' x 3"	1,790
16' x 4' x 3"	1,994
6' x 6' x 3"	1,202
8' x 6' x 3"	1,460
10' x 6' x 3"	1,720
12' x 6' x 3"	1,980
14' x 6' x 3"	2,240
16' x 6' x 3"	2,498



Size	Weight #
6' x 8' x 3"	1,432
8' x 8' x 3"	1,746
10' x 8' x 3"	2,060
12' x 8' x 3"	2,374
14' x 8' x 3"	2,690
16' x 8' x 3"	3,004

AEX Aluminum Framed Trench Shields



Size	Weight #
8' x 4' x 3"	650
8' x 6' x 3"	920
8' x 8' x 3"	1,200
8' x 8' x 3"	1,736
10' x 4' x 3"	1,150
10' x 6' x 3"	1,710
10' x 8' x 3"	2,200
12' x 4' x 3"	1,450
12' x 6' x 3"	2,100
12' x 8' x 3"	2,650
16' x 4' x 3"	1,750
16' x 6' x 3"	2,450
16' x 8' x 3"	3,200
18' x 4' x 3"	2,300
18' x 6' x 3"	2,860
18' x 8' x 3"	3,450



Modular Aluminum Panel Shields (MAPS)



Size	Weight #
3' x 2' x 3"	37
4' x 2' x 3"	51
5' x 2' x 3"	62
6' x 2' x 3"	79
8' x 2' x 3"	106
10' x 2' x 3"	134
12' x 2' x 3"	162
14' x 2' x 3"	180

Ultra-Shore Aluminum Trench Shields



Size	Weight #
5' x 2' x 3"	74
7' x 2' x 3"	96
5' x 4' x 3"	130
7' x 4' x 3"	160
10' x 4' x 3"	230
12' x 4' x 3"	300

Aluminum Hydraulic Trench Shields



Size	Weight #
8' x 6' x 3"	1,238
10' x 6' x 3"	1,534
12' x 6' x 3"	1,702
8' x 8' x 3"	1,374
10' x 8' x 3"	1,686
12' x 8' x 3"	1,913

Z-Shore™ Hydraulic Ram Shoring



Z-Shore can be mounted on timbers of varying thickness, or even steel beams to meet your structural needs in the space allowed. It fits trenches from 5' to 30' wide, of any depth, with a hydraulic stroke from 2' to 3'.

Aluminum Hydraulic Shoring Standard & High Clearance



Dimensions Inches

17" to 27"
22" to 36"
25" to 42"
31" to 45"
34" to 56"
40" to 64"
52" to 88"
61" to 97"
70" to 106"
79" to 115"
88" to 124"
97" to 133"
106" to 142"
132" to 168"
144" to 180"

Dimensions Feet

1' 5" to 2' 3"
1' 10" to 3'
2' 1" to 3' 6"
2' 7" to 3' 9"
2' 10" to 4' 8"
3' 4" to 5' 4"
4' 4" to 7' 4"
5' 1" to 8' 1"
5' 10" to 8' 10"
6' 7" to 9' 7"
7' 4" to 10' 4"
8' 10" to 11' 10"
8' 1" to 11' 1"
11' to 14'
12' to 15'



Aluminum Waler



Designed to allow maximum protection, coupled with the versatility and flexibility needed to work around crossing utility lines. Walers with hydraulic struts allow end-loading in a 3- or 4-sided application, for pipe repair or valve maintenance.

Manhole Braces



Designed and engineered to work in 2- and 4-sided applications, the 3" Dual Action Manhole Shore is able to incorporate a variety of sheeting materials, including the GME Steel Overlap Sheeting, making the system ideal for vaults, C.I.P. projects, pump stations and many more projects.

Trench Tops™ Steel Trench Plates



Size	Weight #	Size	Weight #
1" Steel		1-1/4" Steel	
4' x 5'	820	8' x 10'	4,100
4' x 6'	984		
4' x 8'	1,312	1-1/2" Steel	
5' x 8'	1,640	6' x 10'	3,690
6' x 8'	1,968	6' x 12'	4,428
8' x 8'	2,624	8' x 10'	4,800
4' x 10'	1,640	8' x 12'	5,904
5' x 10'	2,045	8' x 15'	7,380
6' x 10'	2,460	8' x 20'	9,840
8' x 10'	3,280		
4' x 12'	1,968	Additional Sizes Available	
6' x 12'	2,952		
8' x 12'	3,936		
8' x 15'	4,920		
8' x 16'	5,248		
4' x 20'	3,280		
8' x 20'	6,560		



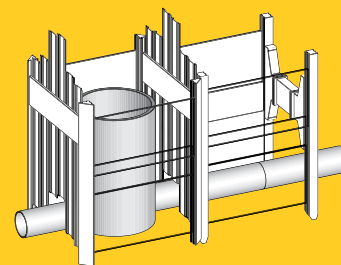
(Regular & Non-Skid)

Z3 Waler System

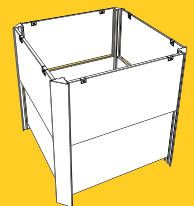


Count on Z3 Waler Systems for excavation support when longer clear span work areas are needed in excavations that are in less stable soils requiring close or intermittent sheeting. Constructed to allow for quick installation and removal from above ground, keeping personnel safely out of un-shored excavations.

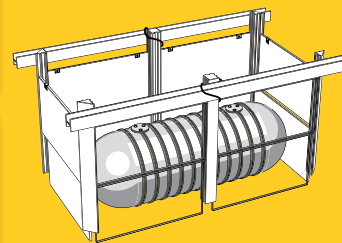
SBH® Slide Rail Rolling Strut System



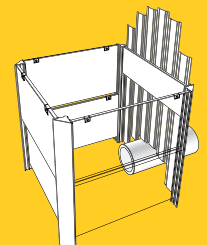
Sheeting system with Rolling Struts



Small rectangular pit closed all four sides



Two bay sheeted pit—re-braced



Small rectangular pit with sheeting on one (or both) ends

Wide Flange Beams & Steel Plates



H-Beams	Weight #	H-Beams	Weight #
8"	40	24"	131
12"	65	24"	146
14"	90	24"	162
14"	99	36"	194
14"	109		
14"	120		

H-Beams available in lengths through 65'

Dual Pack Shores/Struts



Dual Pack Shores allow you to use a variety of materials including end loading, aluminum overlap sheet pile, Fin Form/1-1/8" plywood, steel plates, directly on steel beams for a static strut replacement.

SBH® Hydralifter T100



The Hydralifter is a hydraulic panel, post, and steel plate extractor. It is used to break free the inner base and top plates that are used in Slide Rail shoring. The Hydralifter safely and gently removes plates without the use of heavy excavators leading to: safety on the site; less equipment damage; less vibration and noise; saving of time and costs.

SHORING & MORE, WE ALSO RENT AND SELL...

Flo-Line™



K-Rail



Water Barriers



Gas Monitors-4 Gas



Pipeline Testing



Tripod w/Harness



Grizzly Screen



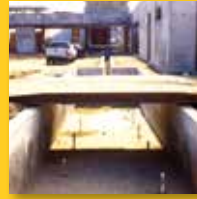
Bedding Boxes



Alum. Trench Bridges



Steel Bridges



Screw Jacks & Plates



Hydraulic Pipe Pullers



TRACKCLEAN®



Trench Safety Anchor



RailGuard 200™



LadderSafe Platform



Self Standing Davit



Clamp-On Davit



Trench Covers



Light Towers



Blowers



TRENCH SHORING UNIVERSITY – Making Sense Out of OSHA Compliance

Competent Person Training for Trenching and Excavating

Our Competent Person for Trenching and Excavating Seminar provides comprehensive training in OSHA Safety and Compliance for would be Competent Persons in the discipline of Trenching and Excavating. The seminars cover CAL-O.S.H.A. Title 8, section 1540 through 1541.1 and Fed OSHA 29 cfr 1926 Subpart P for trenching and excavating. The excavation standard, the general requirements for working in trenches and excavations safely, soils classification, protective systems and an introduction to confined space entry.

Confined Space Entry Training

Our Confined Space Entry training program, "Confined Space Entry" is intended to provide managers, foremen, competent persons, and workers with basic information regarding entry into confined spaces. It's purpose is intended to create an awareness of the hazards associated with confined space entry, to help workers understand the procedures that must be followed when entering confined spaces, and to provide managers with basic information necessary to establish a confined space entry program.

Find out more at: TrenchShoring.com/Training



"Commitment To Safety & Service"
Since 1973

Compton • Corporate Office

206 N. Central Ave.
Compton, CA 90220
(310) 327-5554

TrenchShoring.com

Bakersfield

(661) 396-9160

Banning

(951) 849-1611

Corona

(951) 734-4290

Fresno

(559) 691-4123

Fullerton

(714) 879-1005

Lake Forest

(949) 454-0858

Moorpark

(805) 529-4614

San Diego

(858) 530-2500

Las Vegas, Nevada

(702) 651-0920